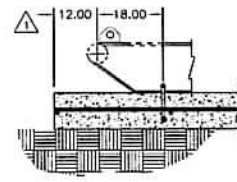


SECTION "B-B"



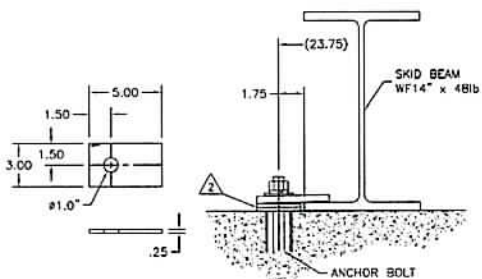
3000 SERIES SKID



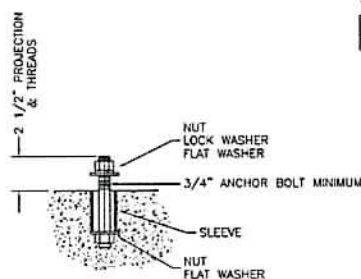
1000 SERIES SKID END

NOTES:

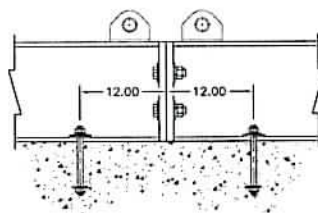
- ▲ OR AS SPECIFIED BY QUALIFIED FOUNDATION DESIGNER.
- ▲ VIEW SHOWN NOT TO SCALE. INSTALLED HEIGHT OF ANCHOR BOLT WASHER SHOULD BE .06" MIN. BELOW TOP OF SKID BEAM FLANGE.
- ▲ AS SPECIFIED BY QUALIFIED FOUNDATION DESIGNER IN ACCORDANCE WITH API-RP-696.
- 4 REFER TO INSTALLATION DRAWING FOR SKID DIMENSIONS & WEIGHTS.
- ▲ FOR TANDEM SKID ASSEMBLIES SEE DETAIL TANDEM SKID.



TYPICAL HOLD DOWN CLIP DETAIL ▲



TYPICAL ANCHOR BOLT DETAIL ▲



TANDEM SKID ANCHOR BOLT LAYOUT ▲

FOUNDATION SCOPE OF SUPPLY

CENTRILIFT RESPONSIBILITY IS LIMITED TO SUPPLYING THE HPUMP SKID ASSEMBLY. ALL FOUNDATION DESIGN AND CONSTRUCTION SHOULD BE PERFORMED FOLLOWING GOOD CIVIL ENGINEERING PRACTICE CONSIDERING LOCAL CODES, SOIL CONDITION, WATER DRAINAGE, ETC. ALONG WITH API-RP-686.

THE FOUNDATION FOR A CENTRILIFT HPUMP SKID ASSEMBLY MUST BE A ONE PIECE REINFORCED CONCRETE PAD OR ADEQUATE FOUNDATION AS SPECIFIED BY QUALIFIED FOUNDATION DESIGNER. THIS IS REQUIRED IN ORDER TO MAINTAIN UNIT ALIGNMENT BETWEEN ALL COMPONENTS. AN ADEQUATE FOUNDATION WILL ALSO HELP MINIMIZE VIBRATION LEVELS. PROPER ALIGNMENT AND LOW VIBRATION WILL PREVENT PREMATURE WEAR OF ROTATING COMPONENTS AND ALLOW THE LONGEST RUN LIFE POSSIBLE. MULTIPLE SUPPORTS UNDER A SKID ASSEMBLY WILL LEAD TO PREMATURE EQUIPMENT FAILURE IF THE SUPPORTS MOVE INDEPENDENT OF EACH OTHER.

NO.	DESCRIPTION	QTY	UNIT	REMARKS
1	ANCHOR BOLTS	4	PCS	
2	FLAT WASHERS	4	PCS	
3	NUTS	4	PCS	
4	LOCK WASHERS	4	PCS	
5	ANCHOR BOLT WASHERS	4	PCS	
6	FLAT WASHERS	4	PCS	
7	NUTS	4	PCS	
8	LOCK WASHERS	4	PCS	
9	ANCHOR BOLT WASHERS	4	PCS	
10	FLAT WASHERS	4	PCS	
11	NUTS	4	PCS	
12	LOCK WASHERS	4	PCS	
13	ANCHOR BOLT WASHERS	4	PCS	
14	FLAT WASHERS	4	PCS	
15	NUTS	4	PCS	
16	LOCK WASHERS	4	PCS	
17	ANCHOR BOLT WASHERS	4	PCS	
18	FLAT WASHERS	4	PCS	
19	NUTS	4	PCS	
20	LOCK WASHERS	4	PCS	
21	ANCHOR BOLT WASHERS	4	PCS	
22	FLAT WASHERS	4	PCS	
23	NUTS	4	PCS	
24	LOCK WASHERS	4	PCS	
25	ANCHOR BOLT WASHERS	4	PCS	
26	FLAT WASHERS	4	PCS	
27	NUTS	4	PCS	
28	LOCK WASHERS	4	PCS	
29	ANCHOR BOLT WASHERS	4	PCS	
30	FLAT WASHERS	4	PCS	
31	NUTS	4	PCS	
32	LOCK WASHERS	4	PCS	
33	ANCHOR BOLT WASHERS	4	PCS	
34	FLAT WASHERS	4	PCS	
35	NUTS	4	PCS	
36	LOCK WASHERS	4	PCS	
37	ANCHOR BOLT WASHERS	4	PCS	
38	FLAT WASHERS	4	PCS	
39	NUTS	4	PCS	
40	LOCK WASHERS	4	PCS	
41	ANCHOR BOLT WASHERS	4	PCS	
42	FLAT WASHERS	4	PCS	
43	NUTS	4	PCS	
44	LOCK WASHERS	4	PCS	
45	ANCHOR BOLT WASHERS	4	PCS	
46	FLAT WASHERS	4	PCS	
47	NUTS	4	PCS	
48	LOCK WASHERS	4	PCS	
49	ANCHOR BOLT WASHERS	4	PCS	
50	FLAT WASHERS	4	PCS	
51	NUTS	4	PCS	
52	LOCK WASHERS	4	PCS	
53	ANCHOR BOLT WASHERS	4	PCS	
54	FLAT WASHERS	4	PCS	
55	NUTS	4	PCS	
56	LOCK WASHERS	4	PCS	
57	ANCHOR BOLT WASHERS	4	PCS	
58	FLAT WASHERS	4	PCS	
59	NUTS	4	PCS	
60	LOCK WASHERS	4	PCS	
61	ANCHOR BOLT WASHERS	4	PCS	
62	FLAT WASHERS	4	PCS	
63	NUTS	4	PCS	
64	LOCK WASHERS	4	PCS	
65	ANCHOR BOLT WASHERS	4	PCS	
66	FLAT WASHERS	4	PCS	
67	NUTS	4	PCS	
68	LOCK WASHERS	4	PCS	
69	ANCHOR BOLT WASHERS	4	PCS	
70	FLAT WASHERS	4	PCS	
71	NUTS	4	PCS	
72	LOCK WASHERS	4	PCS	
73	ANCHOR BOLT WASHERS	4	PCS	
74	FLAT WASHERS	4	PCS	
75	NUTS	4	PCS	
76	LOCK WASHERS	4	PCS	
77	ANCHOR BOLT WASHERS	4	PCS	
78	FLAT WASHERS	4	PCS	
79	NUTS	4	PCS	
80	LOCK WASHERS	4	PCS	
81	ANCHOR BOLT WASHERS	4	PCS	
82	FLAT WASHERS	4	PCS	
83	NUTS	4	PCS	
84	LOCK WASHERS	4	PCS	
85	ANCHOR BOLT WASHERS	4	PCS	
86	FLAT WASHERS	4	PCS	
87	NUTS	4	PCS	
88	LOCK WASHERS	4	PCS	
89	ANCHOR BOLT WASHERS	4	PCS	
90	FLAT WASHERS	4	PCS	
91	NUTS	4	PCS	
92	LOCK WASHERS	4	PCS	
93	ANCHOR BOLT WASHERS	4	PCS	
94	FLAT WASHERS	4	PCS	
95	NUTS	4	PCS	
96	LOCK WASHERS	4	PCS	
97	ANCHOR BOLT WASHERS	4	PCS	
98	FLAT WASHERS	4	PCS	
99	NUTS	4	PCS	
100	LOCK WASHERS	4	PCS	